

# Locks Heath Infant and Junior Schools

### KEY

**School Entrances**

- Motor Vehicles
- Pedestrian
- Schools
- School Crossing Patrols
- Light controlled Toucan crossing
- Bus Stops
- Cycle/scooter storage
- Playground
- Footpath
- Leisure route (unmetalled surface)
- Off road dedicated cycle lane
- Off road shared with footway
- On road dedicated cycle lane
- On road recommended route
- Park & Stride Parking



Contains Ordnance Survey data © Crown copyright and database right 2016  
 Contains OpenStreetMap data "© OpenStreetMap contributors"



This map has been created to help make it easier to get to Locks Heath Infant and Junior Schools by showing walking, cycling and park and stride routes, safer places to park and safer places to cross the road.

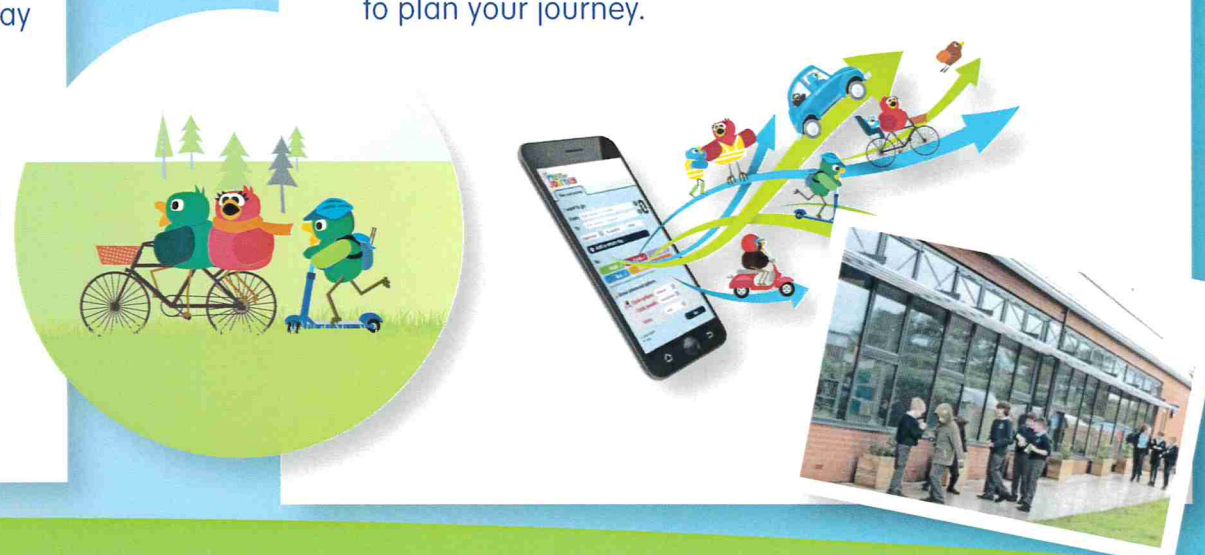
## Benefits of being active on your journey to school

- Using your bike and scooter instead of the car can save money on fuel, reduce your carbon footprint and improve the air quality at school
- Walking burns as many calories as jogging the same distance. If you walk briskly (about 4mph) you can burn up to 150 calories in 30 minutes, contributing to your child's 90 active minutes per day and one of your five 30 active minutes per week
- Walking, cycling and scooting with your children and other families is a great way to have quality time together and catch up, with the added bonus of getting fit
- Being active on your journey to school helps you to feel better by releasing endorphins in your brain and can help you all to de-stress

## Plan your journey

Plan your journey to school and around the local area with our online journey planner. It can help you decide how to travel and tell you how many calories you will burn if you choose to walk or cycle, some or all of that journey.

[myjourneyhampshire.com/journeyplanner](http://myjourneyhampshire.com/journeyplanner) to plan your journey.



### Why not Park and Stride?

Now you can use Abshott Community Centre on week days at the following times:  
8:20am-9:20am, 2:50pm-3:40pm



## How to be safer and active on your journey to Locks Heath Infant and Junior Schools

### Infant School

- Locks Heath Infant school is situated behind the Junior School, on Warsash Road. This road is extremely busy and we ask that you always use the Crossing Patrol or Pelican Crossing when crossing the road. We have three Crossing Patrols situated on busy junctions approaching the school but note that **there is no guarantee that the Crossing Patrol Officers will be on duty.**
- Entrance to the Infant School is via the gate on Warsash Road. Please use the footpath by the side of the Junior School. Please keep to the walkways when crossing the infant school
- Parents who walk through the staff car park are requested to keep to the paths and only cross on the designated crossing areas. This is to ensure the safety of all pedestrians.
- For the safety of pedestrians we ask that you do not use scooters or bikes on the school site

### Junior School

- Locks Heath Junior School is situated on the busy Warsash Road. All children who cross the Warsash Road must use the crossing patrol or the pelican crossing outside the school and parents should set a good example in this matter.
- There is a staff/visitor car park off the Warsash Road fifty metres west of the school, which is controlled by a barrier operated from the office. It is only open for appointed visitors and staff. **Please do not bring your child to school by car unless this is absolutely necessary.** If you are driving near the school, be alert and considerate.
- We have crossing patrols situated on busy junctions approaching the school but note **there is no guarantee that the Crossing Patrol Officers will be on duty.**
- There are two pedestrian entrances to the school – one is via the gate by the staff/visitors car park, the other is the gate to the east of the school (Locks Road side). **Please do not use the staff entrance gate at any time as vehicles regularly move in this area.**

[www.lockshealthinfant.com](http://www.lockshealthinfant.com)

Facebook.com/myjourneyhants

@MyJourneyHants

info@myjourneyhampshire.com

www.myjourneyhampshire.com  
More travel information can be found on the My Journey website  
Keep in touch with My Journey

Travel to  
**Locks Heath Infant School and Locks Heath Junior School**

