

# What do our parents say?

**"We would like to express our thanks to all who have made \*\*\*\*'s first year so enjoyable and for taking such great care of him."**  
Early Years

**"My child said she never wants to stop going to her school ...ever!"**

**"Raised a concern and it was dealt with swiftly and effectively"**



**"I cannot fault your dedication"**

**"My daughter has really thrived since starting at the school and really enjoys her time there"**

**"\*\*\*\*\* really enjoys coming to school and made the transition well with the support of the excellent teachers"** Early Years

**"The teachers are outstanding and I have never had a problem with the school"**

# 2019

# What do our parents say?

	Yes	No	Not sure
Would you recommend this school to another parent?	100%	-	-

Question	Strongly agree	Agree
My child is happy at this school.	94%	6%
	100%	
My child feels safe at this school.	92%	8%
	100%	
My child makes good progress at this school.	86%	14%
	100%	
My child is well looked after at this school.	86%	18%
	100%	

My child receives appropriate homework for their age.	74%	22%	-	-	4%
	96%		-		

# Children are with us for 3 years

- Early Years (Reception)
  - Year 1
  - Year 2
- They then transfer to the Junior school
- 12 classes of no more than 30 children in each class
- Each child seen as an individual respected for their own interests and provided with a tailored learning journey throughout the school
- Own classroom with a Class Teacher, Learning Support Assistant and Lunchtime Play Leader

# Our Learning Values

Our compass is at the very heart of life and learning  
at Locks Heath Infant School



# Our Learning Values

## Guiding Principles

Never giving up

Everyone caring

Seeking to find out

Working together



## Values

Determination and Resilience

Respect and Empathy

Curiosity and Love of Learning

Collaboration and Teamwork

*Learning together on  
a voyage of discovery*

*Never giving up*

*Working  
together*

*Everyone  
caring*

*Seeking to find out*



# Our Early Years Outdoor Classroom





# Lunch time



# Our school hall



# Our Library



# IT and Computing in the curriculum



Laptops in class

Use of ipads





Pirate Ship



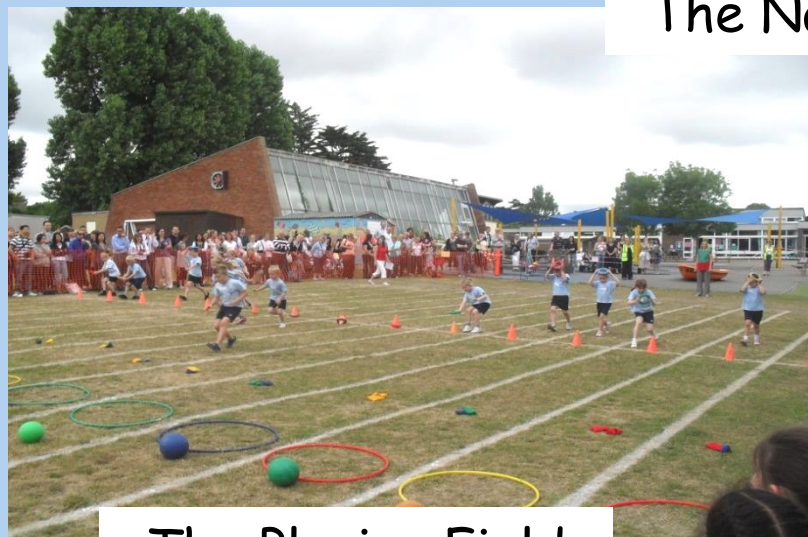
MUGA

Multi-use games area

# The Playing Field, Nature Reserve and Swimming Pool



The Nature Reserve



The Playing Field

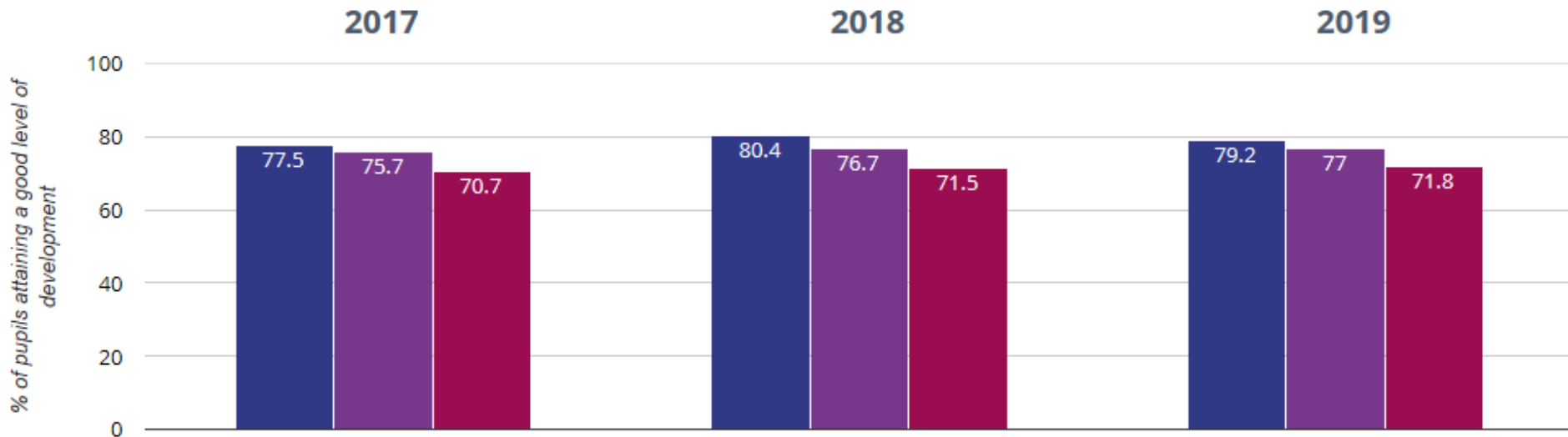


The Swimming Pool

# Academic achievement at our school?

## Early Years - End of Year Results

### ★ Good Level Of Development



Blue = Locks Heath Infant School

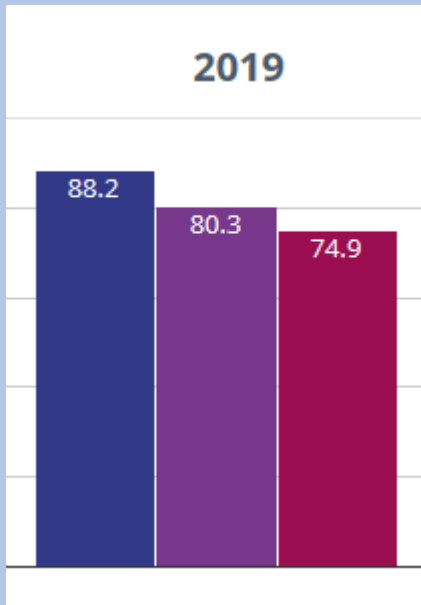
Purple = Hampshire County Council Average

Red = National Average

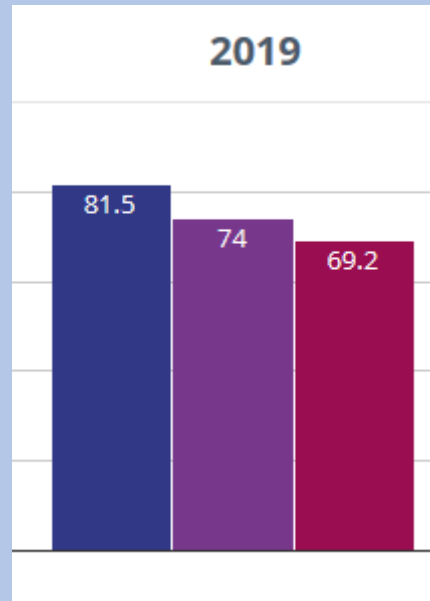
# Academic achievement at our school?

Year 2 End of Year Results - These show the percentage of children reaching the expected level in each subject area:

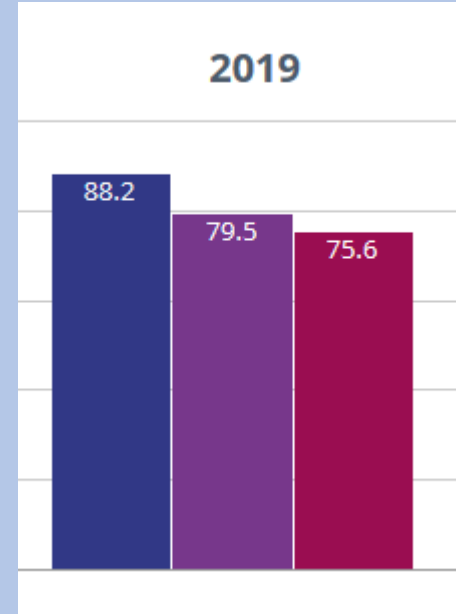
Reading



Writing



Maths



Blue = Locks Heath Infant School

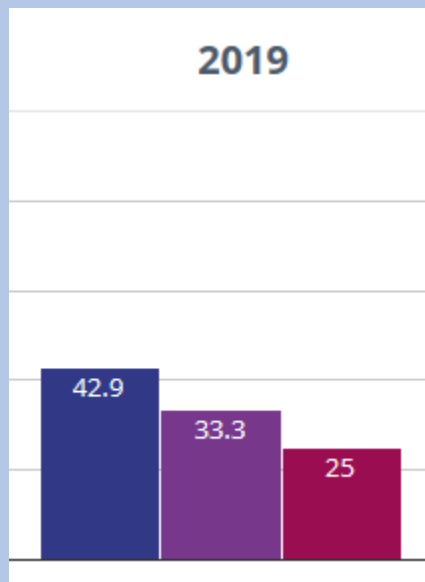
Purple = Hampshire County Council Average

Red = National Average

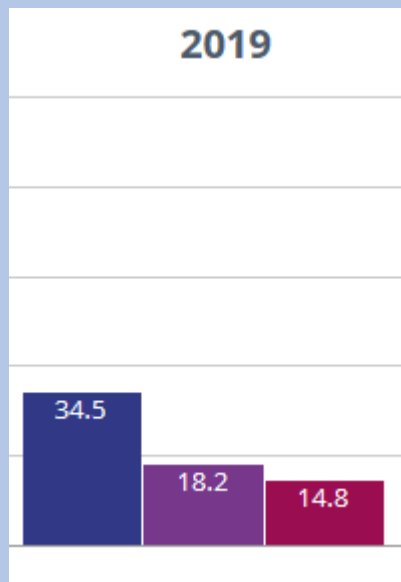
# Academic achievement at our school?

Year 2 End of Year Results - These show the percentage of children reaching the exceeding level in each subject area:

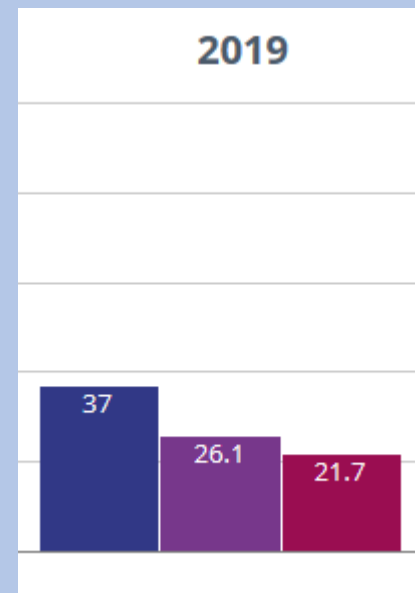
Reading



Writing



Maths



Blue = Locks Heath Infant School

Purple = Hampshire County Council Average

Red = National Average

# Academic achievement at our school?

There are many elements to writing development that are considered during the 3 year journey. These are examples of writing from the end of Year 2.

Writing

Last night I woke up to the smell of smoke and fire. I ran to the window and looked out. ~~It~~ ~~I~~ saw in the distance I saw bright red flames leaping above the houses and thick, black smoke rushing through the ~~air~~ sky. Nervously I got dressed ~~at~~ and I carefully packed my belongings. Quickly I sprinted down the creaky stairs towards the door. slowly I peeked out <sup>of</sup> my door...

At the end of a gloomy corridor I saw a frosty <sup>hundreds</sup> ~~lots~~ of ice. In the library I saw <sup>hundreds</sup> ~~lots~~ of flying books and the library was <sup>huge</sup> ~~big~~. All around me I could hear groaning gears. Beneath my feet I

# Before your child starts...

We offer many different events to help prepare you and your child for life at our school. These include:

- Visits to our school
- New parents induction evening
- Online videos from teachers and leaders
- Virtual tours of the classrooms

# What happens when your child starts?

You and your child will be invited for an individual meeting, with the class teacher and learning support assistant, held at school in your child's classroom.

Children will attend school in the mornings only from 8.55 - 12 noon in their new classes for the first few days.

There will be opportunity for parents to stay and experience lunchtime with their child.

Children will start full time from there.

# Applying for a school place

- You can apply online from 1st November 2020  
[Click Here](#)
- Or using a paper application form available from a Hampshire infant or primary school
- **Application deadline is 15<sup>th</sup> January 2021**
- You will find out on 16<sup>th</sup> April 2021 through an email from Hampshire County Council

We are so very proud of the experiences we provide for our children.

Our top priority is happy and safe children. Children flourish in safe and happy environments!