

key word spelling

Remember to practise your cursive writing as you
practise your spelling

I

to

no

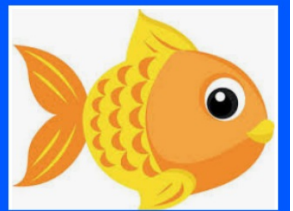
go

the



he

we

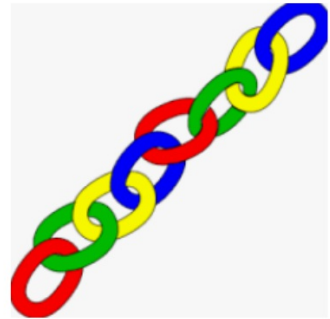
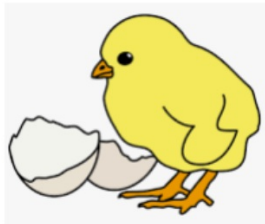
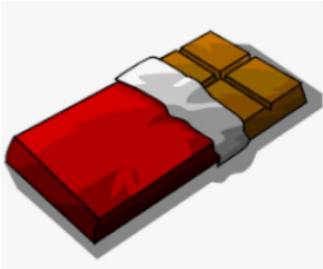
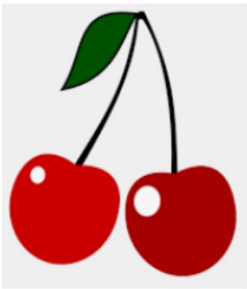


she

me



be





ch

The horse sneezes when the caterpillars hairs get up his nose



chop.

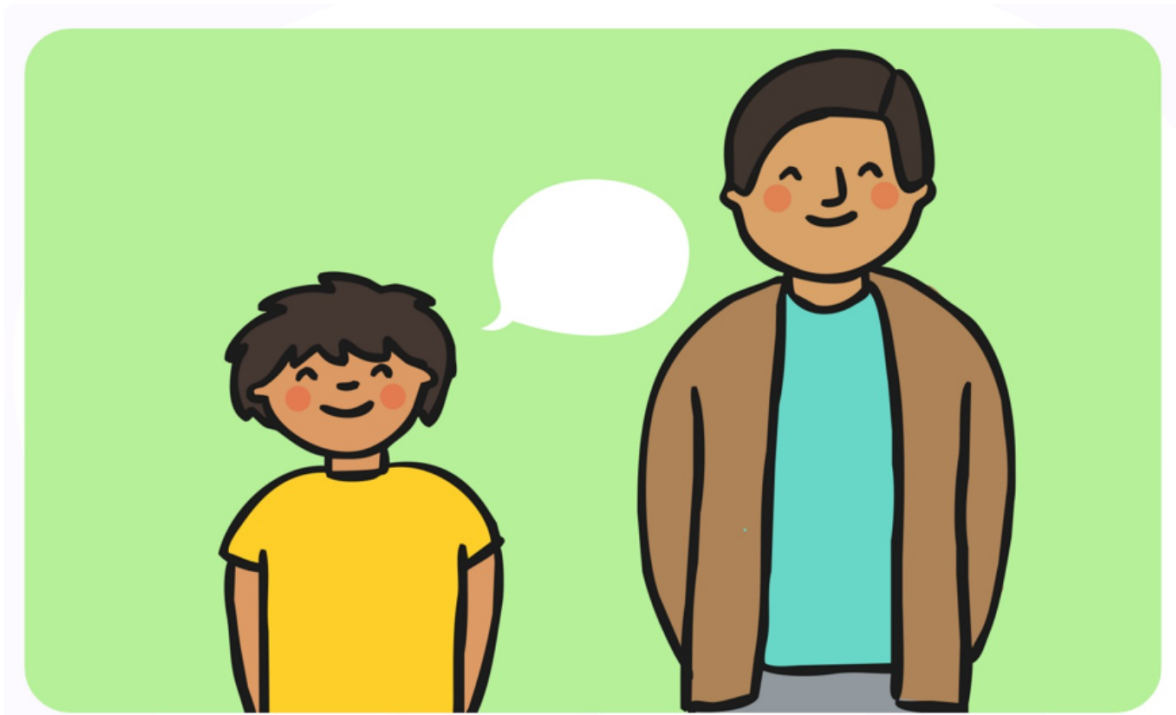


chip.

Read the words and add the sound buttons.
Remember to draw a line under the 'ch' digraph.

chess	chop
chip	chat

Ben had a chat with his dad.



sh

